

# Mobile Pedestal - 21.6'' Height x 15.7'' Width x 19.6'' Depth

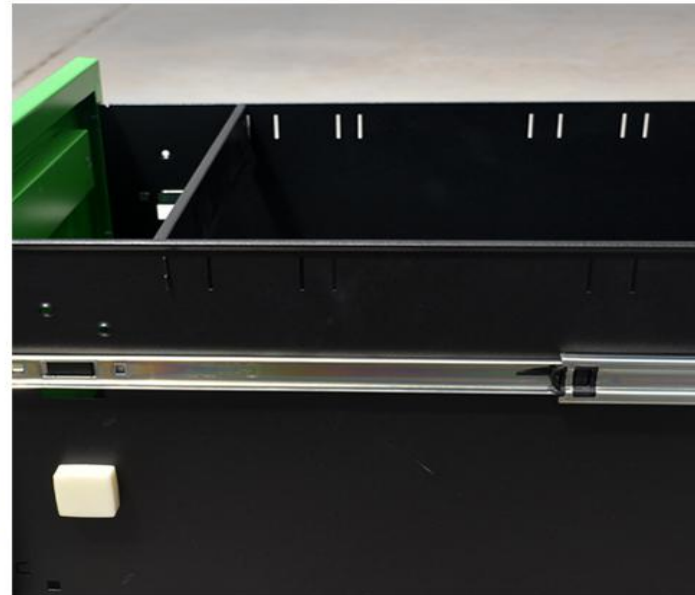
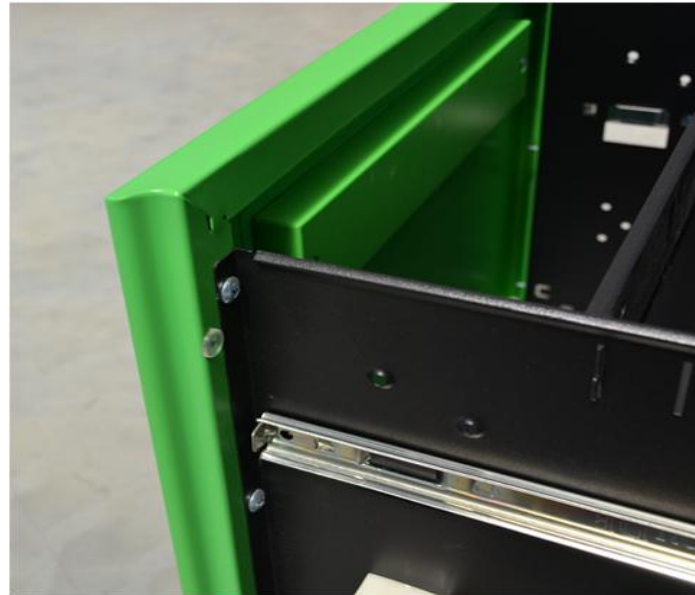
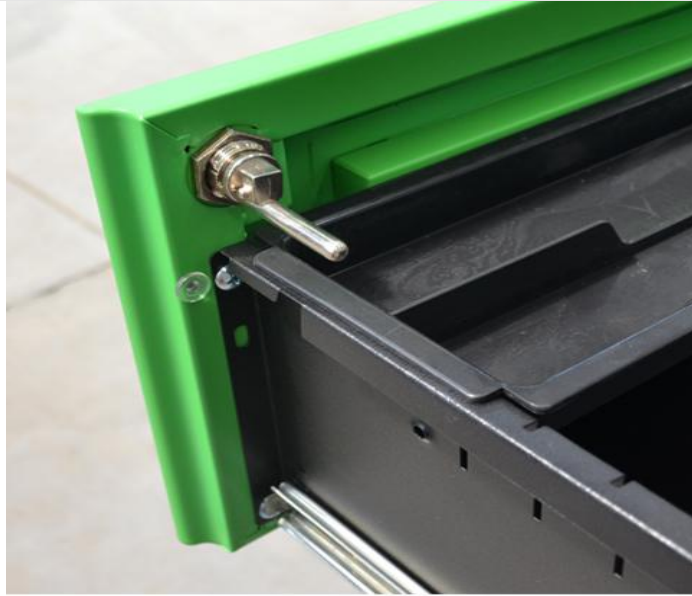
**WOMA**



Brand name	WOMA Mobile Pedestal		
Item No.	W-M24		
Material	High quality cold rolled steel sheet Q235		
Steel thickness ( mm )	0.6	0.7	
Item weight ( kg )	19	22	
Size ( mm )	H550*W400*D500		
Packing size ( mm )	570*430*530		
Surface	Durable electrostatic powder coating		
Loading capacity	20GP	40GP	40HQ
	215	430	523

Mobile Pedestal - 21.6'' Height x 15.7'' Width x 19.6'' Depth

Detail



Contact: [woma@lysteelfurniture.com](mailto:woma@lysteelfurniture.com)